

# Foot and mouth disease free- status

E.F.Rozenblad

Chief Veterinary Officer Suriname

Lima, April 2014

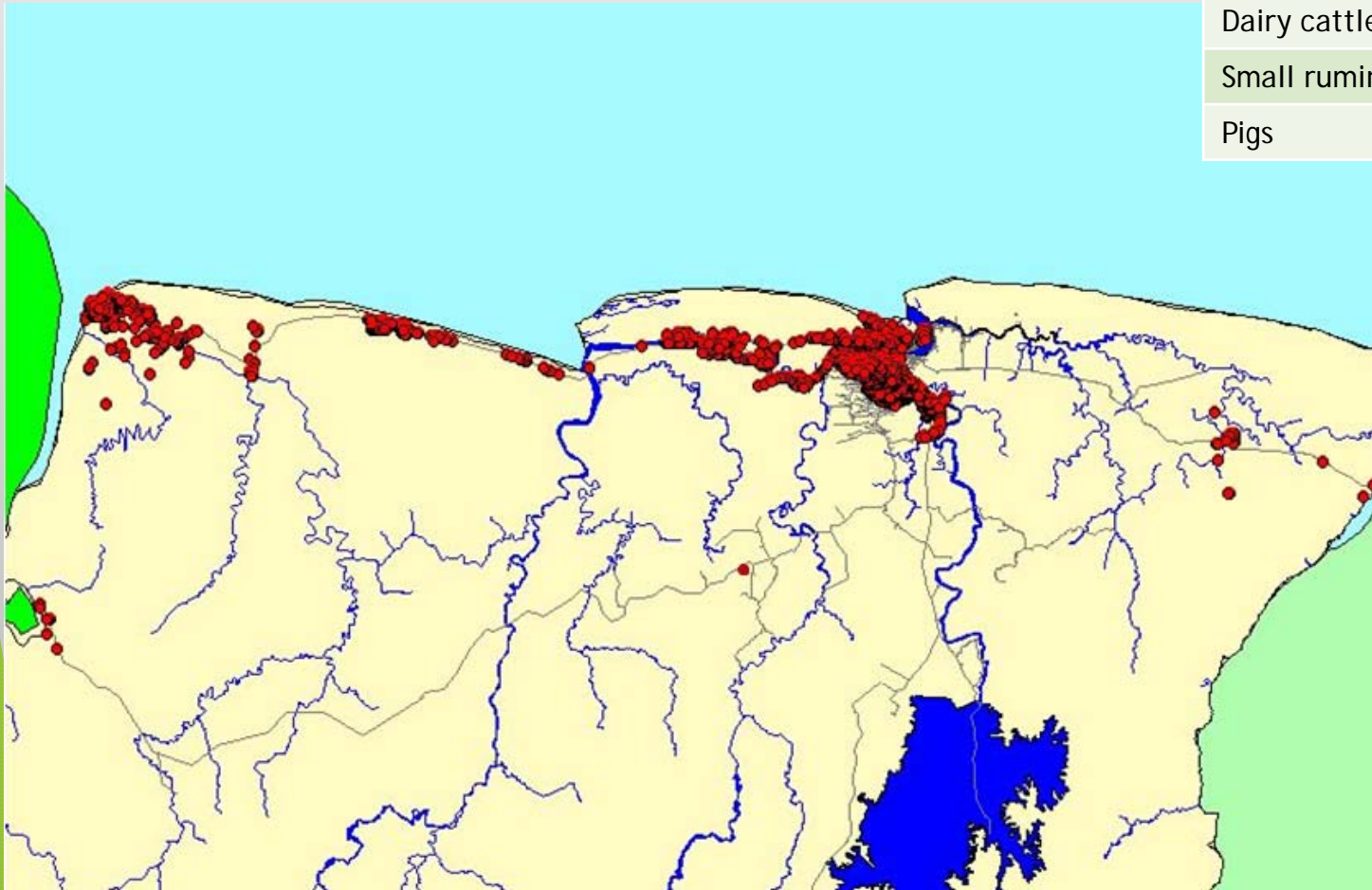
# Geographical distribution

- Total area of 163,270 sq. km
- Between latitudes 2° and 6° N, and the longitudes 54° and 58° W.
- Physiographically Suriname can be divided into 3 zones; the coastal plain, the zanderij belt and the interior uplands.
- Southern part of the country, 80 % is tropical rain forest, rivers and hilly land
- A coastline of about 386 km
- The capital is Paramaribo, located on the coast

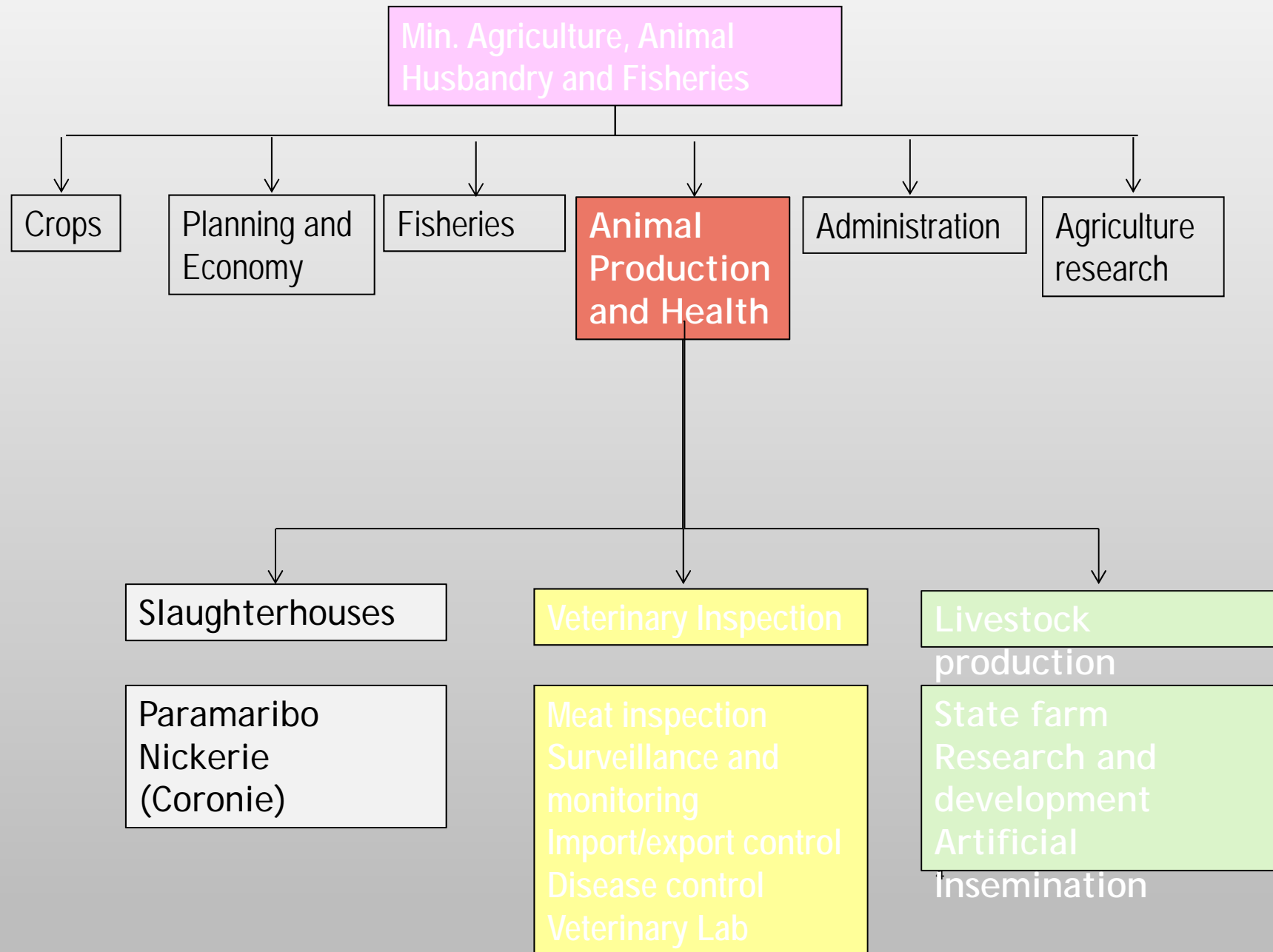


# Localization of farms

Animal classification	Farms	Animals
Cattle / buffalo	1000	24.000
Dairy cattle	1000	16.000
Small ruminants	1000	18.000
Pigs	155	22.000



# Veterinary Services Suriname



# Veterinary Inspection



# GOALS

- ▶ FMD never reported; free without vaccination... however
- ▶ We need to:
  - ▶ Secure the availability of meat and milk Suriname and improve the social economic efficiency of livestock production
  - ▶ Eliminating restrictions to international and domestic trade of animal and their products for the Region

By strengthening our Veterinary capacity with the FMD program

# Request for Foot and mouth disease free status

1. Follow PHEFA guidelines
2. Legislation (!)
3. Identification and Registration of farm and animal (data management/system)
4. Control of animal movement
5. Laboratory
6. Surveillance
7. Contingency plan
8. Sero- survey FMD

# 1. legislation

- Draft legislation (FAO project)
  - Surveillance
  - Contingency planning
  - Control animal movement

Regulations  
April 2014

Final draft  
regulations  
June 2014

Advocacy  
legislations

Sent  
regulations  
for approval  
October 2014



## 2. System Record

- Update information on farm identification and registration from Census 2008
- New data system (from PANAFTOSA) and training personnel (data management, meat inspectors, laboratory)
- Animal movement

Planning  
April 2014

Implementation  
new data system  
and training  
personnel May  
2014

Cost estimate  
fieldwork  
August 2014

Finish farm I&R  
April 2015

# 3. Control of animal movement

- Regulations (sanctions, forms)
- Forms for animal movement
- Technical capacity upgrade (trainings)
- System control

Planning  
May 2014

Final regulations  
November 2014

Announcement plan  
and new act and  
organizing mobile  
control points  
December 2014

Training officials  
February 2015

Implementation  
May 2015

# 4. Laboratory

- Construction new lab.
- Technical and human capacity upgrade
- Surveillance
- Accreditation for FMD diagnosis (ELISA/PCR)



Construction final  
July 2014

Inventarisation needed capacities  
August 2014

Training FMD diagnostics  
September 2014

Equipment in place  
December 2014

Operating  
February 2015

Accreditation lab  
May 2015



# 5. Surveillance

- Planning targets for FMD
- Capacity training stakeholders



## 6. Contingency plan

- Identify group
- Prepare contingency plan
- Training stakeholders (personnel; sampling, diagnostics)
- Simulation exercise

Identify group  
June 2014

Contingency  
plan  
November  
2014

Training &  
Simulation  
April 2015

# 7. Sero-survey FMD

- Plan design
- Cost estimate
- Testing
- Documentation OIE



# Suriname and COSALFA

- ▶ Stay free without vaccination by becoming a member of COSALFA and follow the PHEFA guidelines
- Hopes to have the approval and support of the South American partner countries

Thank you for your attention!  
Gracias para su atención!  
Obrigado pela sua atenção!